

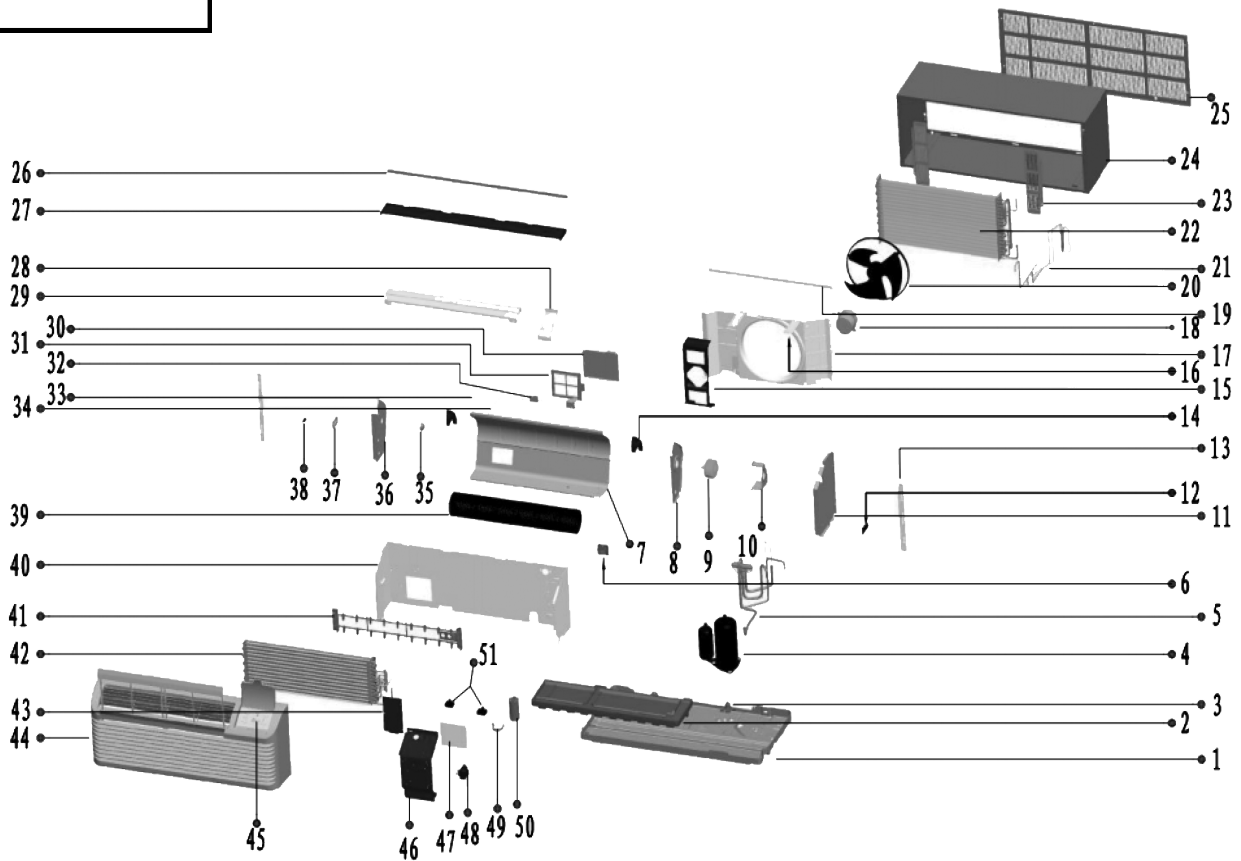
# PERFECT COMFORT

Packaged Terminal Air Conditioner (PTAC)  
42" Thru the Wall Series  
Digital Controls with Thermostat Ready Option

## PARTS LIST

Model No.

PCNTW07K3H5T, PCNTW09K3H5T, PCNTW12K3H5T, PCNTW15K3H5T



## Heat Pump with Electric Heater

		PCNTW07K3H5T	PCNTW09K3H5T	PCNTW12K3H5T	PCNTW15K3H5T
No.	Part Name	Item Code	Item Code	Item Code	Item Code
1	Pan components	801220890133	801220890133	801220890133	801221190075
2	Drain valve	801619900533	801619900533	801619900533	801619900533
3	Foam water pan	802220890006	802220890006	802220890006	802220890006
4	Compressor	801401600007	801401600006	801401600005	801401600004
5	Four-way valve welding components	801620390093	801620590223	801620890196	801621190076
5.1	Four-way valve	801600100034	801600100034	801600100034	801600100034
5.2	Four-way valve coil	802420590013	802420590013	802420590013	802420590013
6	Line press plate	801120890008	801120890008	801120890008	801120890008
7	Air duct	801220890153	801220890153	801220890153	801220890153
8	Right side board assy of air duct	801220890157	801220890157	801220890157	801220890157
9	Indoor single-axle motor	802400400492	802400400495	802400400493	802400400503
10	Indoor motor support	801220890158	801220890158	801220890158	801220890158
11	E-box left side board assembly	801220890159	801220890159	801220890159	801220890159

12	Groove clamp	801102000020	801102000020	801102000020	801102000020
13	Left and right fixing clamp components	801220890167/ 801220890170	801220890167/ 801220890170	801220890167/ 801220890170	801220890167/ 801220890170
14	Left and right parts of air duct	801120890013/ 801120890014	801120890013/ 801120890014	801120890013/ 801120890014	801120890013/ 801120890014
15	Outdoor motor support	801220890144	801220890144	801220890144	801220890144
16	Connection plate	801220890166	801220890166	801220890166	801220890166
17	Wind inlet guide	801120890019	801120890019	801120890019	801120890019
18	Outdoor single-axle motor	802400400494	802400400494	802400400494	802400400494
19	Wind inlet guide plate	801220890190	801220890190	801220890190	801220890190
20	Propeller fan	801120890009	801120890009	801120890009	801120890009
21	The check valve pre-welded components	801620390095	801620590224	801620890193	801621190079
21.1	One-way valve	801600300055	801600300054	801600300054	801600300054
22	Condenser	801520390007	801520890038	801520890038	801520890038
23	Condenser Baffles	801220890146	801220890146	801220890146	801220890146
24	Wall sleeve	801220890203	801220890203	801220890203	801220890203
25	Exterior Grille	801220690038	801220690038	801220690038	801220690038

26	Panel board support	801220890164	801220890164	801220890164	801220890164
27	Top cover	801220890179	801220890179	801220890179	801220890179
28	Seal board 2	801220890177	801220890177	801220890177	801220890177
29	Air outlet	801220890172	801220890172	801220890172	801220890172
30	Fresh air inlet cover	801220890150	801220890150	801220890150	801220890150
31	Fresh air inlet filter	801120890010	801120890010	801120890010	801120890010
32	Fresh air inlet support	801220890151	801220890151	801220890151	801220890151
33	Fresh air inlet groove clamp	801120890017	801120890017	801120890017	801120890017
34	Fresh air inlet spring and tube	802920890004/ 801120890028	802920890004/ 801120890028	802920890004/ 801120890028	802920890004/ 801120890028
35	Bearing / bearing fixed plate	802720890002/ 801220890156	802720890002/ 801220890156	802720890002/ 801220890156	802720890002/ 801220890156
36	Left side board assy of air duct	801220890155	801220890155	801220890155	801220890155
37	Fresh air inlet rail	801120890012	801120890012	801120890012	801120890012
38	Fresh air inlet lever	801120890011	801120890011	801120890011	801120890011
39	Cross-flow fan	802920890005	802920890005	802920890005	802920890005
40	Septum plate assembly	801220890148	801220890148	801220890148	801220890148

41	Electric heating	802402000108	802402000108	802402000108	802402000108
42	Evaporator	801520590052	801520590052	801520890039	801520890039
43	Seal board 1	801220890175	801220890175	801220890175	801220890175
44	Panel components	801120890020	801120890020	801120890020	801120890020
44.1	Front panel	801120890021	801120890021	801120890021	801120890021
44.2	Fixing panel clamp	801220890192	801220890192	801220890192	801220890192
44.3	Filter net	801120890022	801120890022	801120890022	801120890022
44.4	Filter net rail	801120890023	801120890023	801120890023	801120890023
44.5	Air outlet grill	801120890024	801120890024	801120890024	801120890024
44.6	Panel cover	801120890025	801120890025	801120890025	801120890025
45	Control board assembly	803320890024	803320890024	803320890024	803320890024
45.1	Electrical box	801120890026	801120890026	801120890026	801120890026
45.2	Control mask	802020890070	802020890070	802020890070	802020890070
45.3	Control board	803300400018	803300400018	803300400018	803300400018
46	Electrical box flip	801220890162	801220890162	801220890162	801220890162

47	PCB	80330030892	80330030892	80330030892	80330030892
48	Transformer	802300200040	802300200040	802300200040	802300200040
49	Capacitor clamp	801200100006	801200100005	801200100005	801200100005
50	Compressor capacitor	802401000023	802401000039	802420490001	802401000039
51	Indoor motor capacitor/ Outdoor motor capacitor	802401100049/ 802401100037	802401100050/ 802401100037	802401100049/ 802401100037	802401100049/ 802401100037
52	Air outlet protection grid	802920890003	802920890003	802920890003	802920890003
54	Indoor temperature sensor"	802300400077	802300400077	802300400077	802300400077
55	Outdoor temperature sensor	802300400129	802300400129	802300400129	802300400129
57	Air return temp. sensor	802300400128	802300400128	802300400128	802300400128
58	LCDI Power cord	802421290007	802421290007	802421290007	802421290007
59	Compressor connecting wire	802421290011	802421290011	802421290011	802421290011